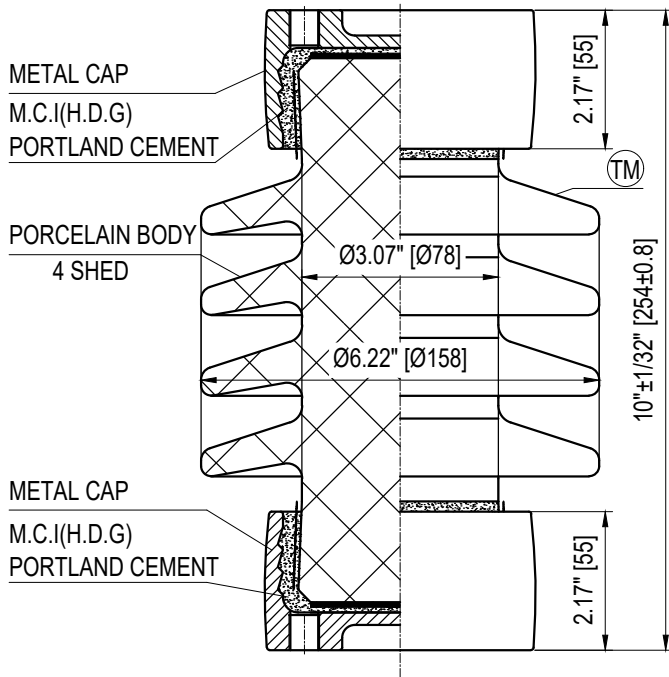
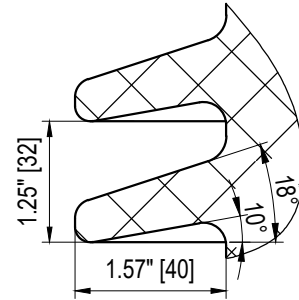
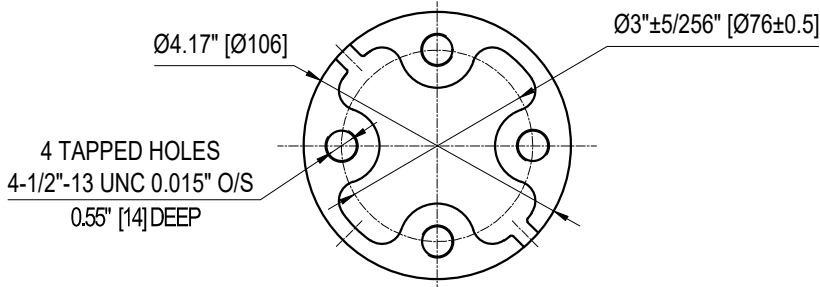
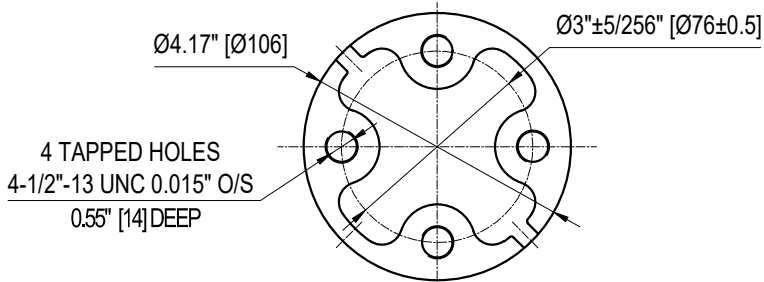


TOP INSTALLATION HOLES



BOTTOM INSTALLATION HOLES



ELECTRICAL PROPERTIES

Critical Impulse Flashover Voltage	
Pos.:	125 kV
Neg.:	200 kV
Low Frequency Withstand Voltage	
Wet:	45 kV
Dry:	50 kV
Impulse Withstand Voltage:	110 kV
Radio Influence Voltage Data:	
Test Voltage to Ground:	10 kV
Maximum RIV at 1000kHz:	50 µV

PHYSICAL PROPERTIES

Creepage Distance:	15.5 in (394 mm)
Net weight:	15.4 lbs (7 Kg)
Color:	

MECHANICAL PROPERTIES

Cantilever Strength:	2000 lbs (8.9 kN)
Tension Strength:	8500 lbs (38 kN)
Torsion Strength:	10621 in-lbs (1.2 kN·m)
Compression Strength:	10000 lbs (44.5 kN)

According to Standard Specification: ANSI C 29.9  
except drawing

Galvanized parts as per ASTM 123

POST TYPE INSULATOR  
REFERENCE: TR205  
VTR205SSG0

DRAWING: TR205 VTR205SSG0 RV1



Vanguard Electric (R)  
www.vanguardelec.com  
sales@vanguardelec.com