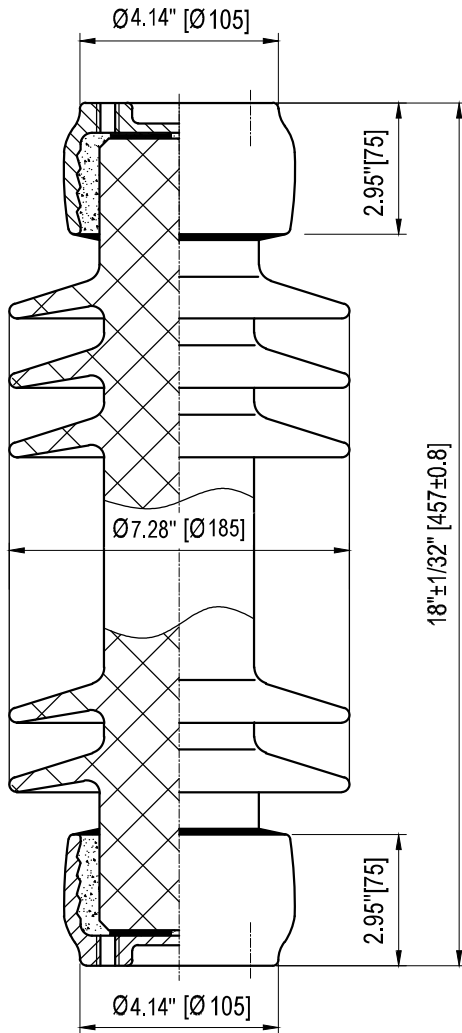
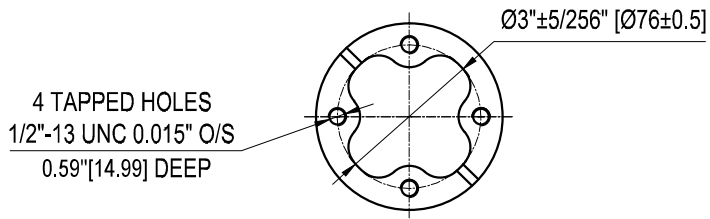
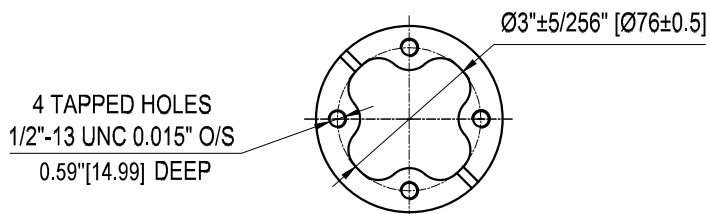


TOP INSTALLATION HOLES



BOTTOM INSTALLATION HOLES



Semi-Conductive Glazed

ELECTRICAL PROPERTIES

Critical Impulse Flashover Voltage	
Pos.:	225 kV
Low Frequency Withstand Voltage	
Wet:	80 kV
Impulse Withstand Voltage:	200 kV
Radio Influence Voltage Data:	
Test Voltage to Ground:	22 kV
Maximum RIV at 1000kHz:	100 µV

PHYSICAL PROPERTIES

Creepage Distance:	37 in (940 mm)
Net weight:	34.1 lbs (15.5 Kg)
Color:	Grey

MECHANICAL PROPERTIES

Cantilever Strength:	2000 lbs (8.9 kN)
Tension Strength:	12000 lbs (53.4 kN)
Torsion Strength:	10000 in·lbs (1.13 kN·m)
Compression Strength:	15000 lbs (66.7 kN)

According to Standard Specification: ANSI C 29.9

Galvanized parts as per ASTM 123

POST TYPE INSULATOR
 REFERENCE: TR210
 VTR210SSG1-SCG

DRAWING: TR210 VTR210SSG1-SCG RV1



Vanguard Electric (R)
 www.vanguardelec.com
 sales@vanguardelec.com