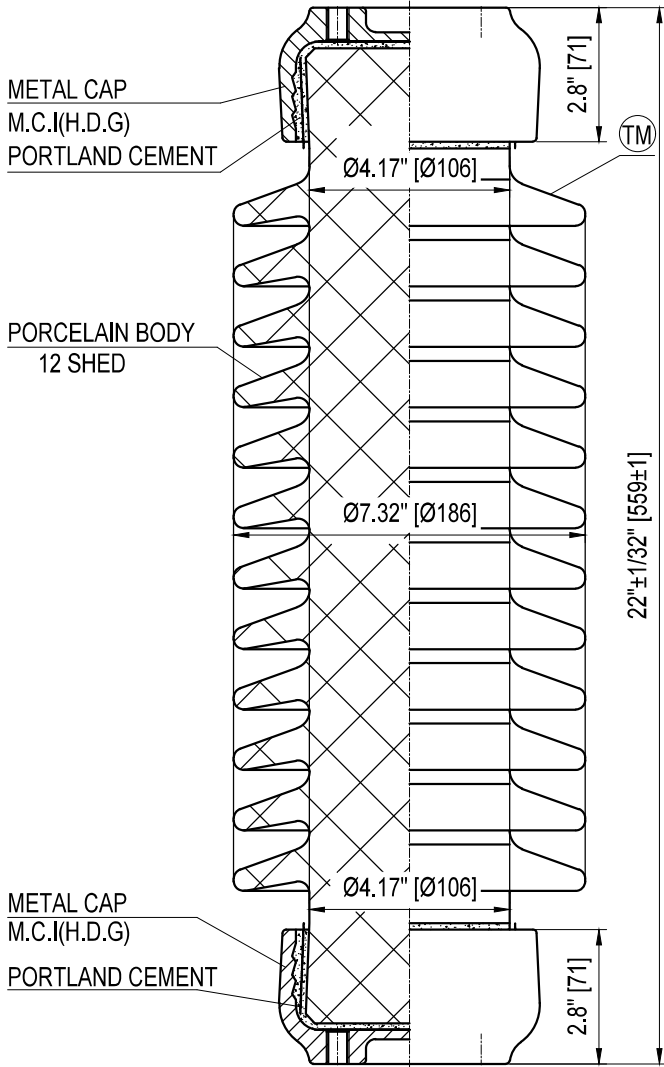
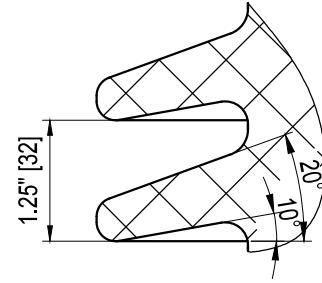
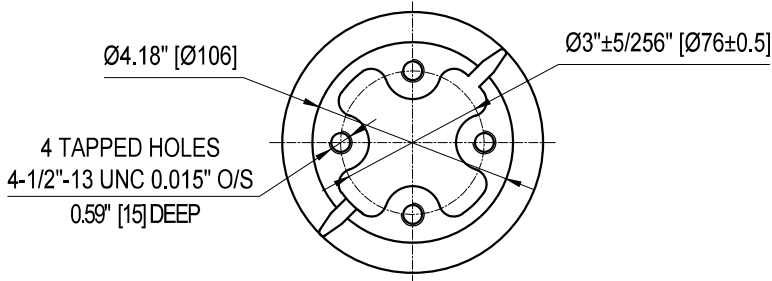
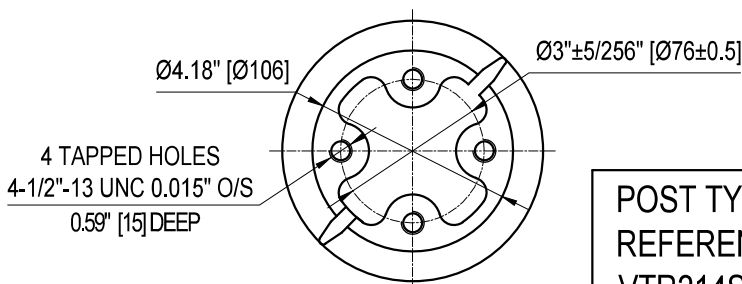


TOP INSTALLATION HOLES



BOTTOM INSTALLATION HOLES



**Semi-Conductive Glazed**

ELECTRICAL PROPERTIES	
Critical Impulse Flashover Voltage	
Pos.:	280 kV
Neg.:	340 kV
Low Frequency Withstand Voltage	
Wet:	100 kV
Dry:	120 kV
Impulse Withstand Voltage:	250 kV
Radio Influence Voltage Data:	
Test Voltage to Ground:	30 kV
Maximum RIV at 1000kHz:	200 µV
PHYSICAL PROPERTIES	
Creepage Distance:	42.99 in (1092 mm)
Net weight:	45.1 lbs (20.5 Kg)
Color:	-
MECHANICAL PROPERTIES	
Cantilever Strength:	2000 lbs (8.9 kN)
Tension Strength:	14000 lbs (62.2 kN)
Torsion Strength:	12000 in-lbs (1356 N-m)
Compression Strength:	15000 lbs (66.7 kN)
According to Standard Specification:	ANSI C 29.9
Galvanized parts as per ASTM 123	

**POST TYPE INSULATOR**  
**REFERENCE: TR214**  
**VTR214SSG0-SCG**  
 DRAWING: TR214 VTR214SSG0-SCG RV0



Vanguard Electric (R)  
 www.vanguardelec.com  
 sales@vanguardelec.com