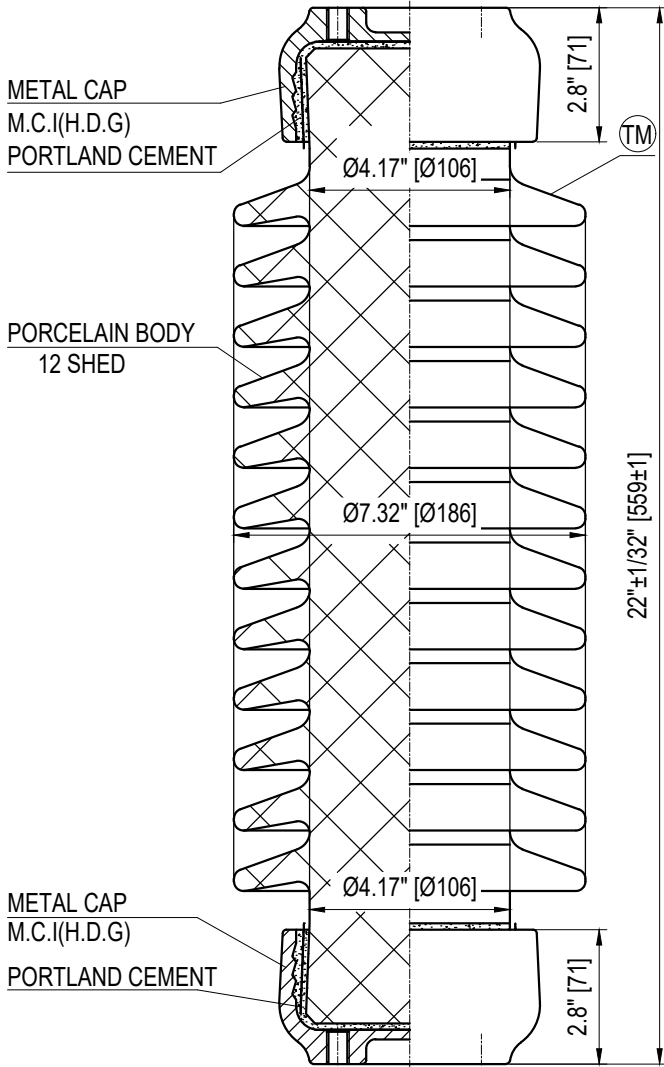
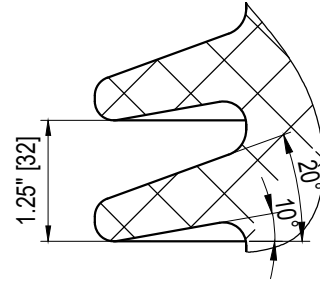
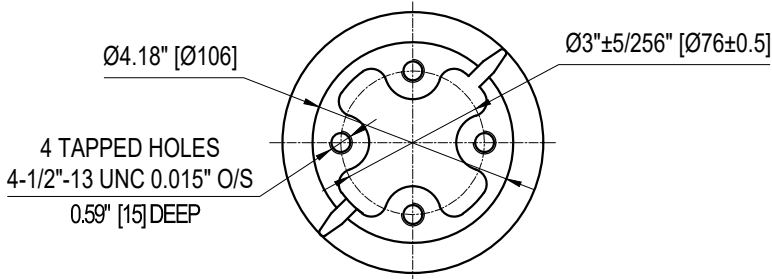
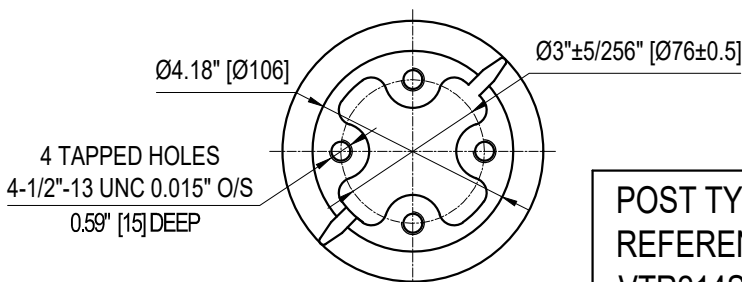


TOP INSTALLATION HOLES



BOTTOM INSTALLATION HOLES



**ELECTRICAL PROPERTIES**

Critical Impulse Flashover Voltage	
Pos.:	280 kV
Neg.:	340 kV
Low Frequency Withstand Voltage	
Wet:	100 kV
Dry:	120 kV
Impulse Withstand Voltage:	250 kV
Radio Influence Voltage Data:	
Test Voltage to Ground:	30 kV
Maximum RIV at 1000kHz:	200 µV

**PHYSICAL PROPERTIES**

Creepage Distance:	42.99 in (1092 mm)
Net weight:	45.1 lbs (20.5 Kg)
Color:	-

**MECHANICAL PROPERTIES**

Cantilever Strength:	2000 lbs (8.9 kN)
Tension Strength:	14000 lbs (62.2 kN)
Torsion Strength:	12000 in-lbs (1356 N-m)
Compression Strength:	15000 lbs (66.7 kN)

According to Standard Specification: ANSI C 29.9  
except drawing

Galvanized parts as per ASTM 123

**POST TYPE INSULATOR**  
**REFERENCE: TR214**  
**VTR214SSG0**

DRAWING: TR214 VTR214SSG0 RV2



Vanguard Electric (R)  
[www.vanguardelec.com](http://www.vanguardelec.com)  
[sales@vanguardelec.com](mailto:sales@vanguardelec.com)