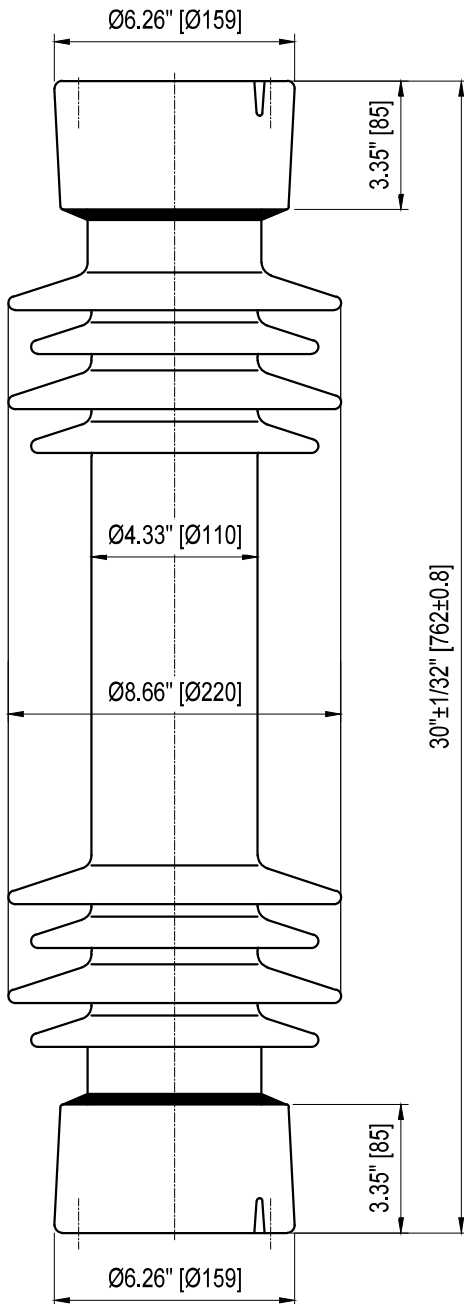
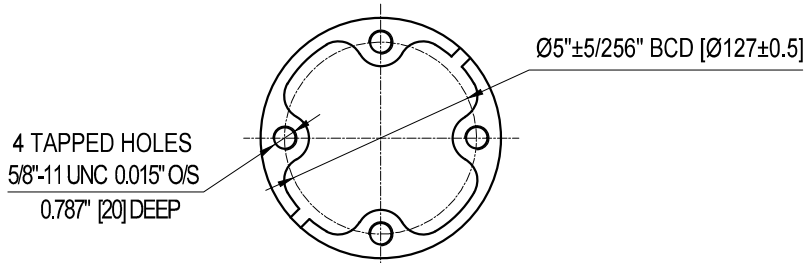
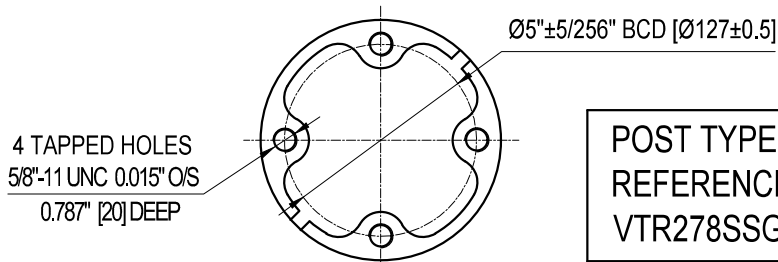


TOP INSTALLATION HOLES



BOTTOM INSTALLATION HOLES



Semi-Conductive Glazed

ELECTRICAL PROPERTIES

Critical Impulse Flashover Voltage	
Pos.:	390 kV
Low Frequency Withstand Voltage	
Wet:	145 kV
Impulse Withstand Voltage:	350 kV
Radio Influence Voltage Data:	
Test Voltage to Ground:	44 kV
Maximum RIV at 1000kHz:	200 μV

PHYSICAL PROPERTIES

Creepage Distance:	72 in (1829 mm)
Net weight:	85.8 lbs (39 Kg)
Color:	Grey

MECHANICAL PROPERTIES

Cantilever Strength:	3000 lbs (13.34 kN)
Tension Strength:	25000 lbs (111 kN)
Torsion Strength:	40000 in-lbs (4.52 kN·m)
Compression Strength:	60000 lbs (267 kN)

According to Standard Specification: ANSI C 29.9

Galvanized parts as per ASTM 123

POST TYPE INSULATOR
REFERENCE: TR278
VTR278SSG1-SCG

DRAWING: TR278 VTR278SSG1-SCG RV0



Vanguard Electric (R)
www.vanguardelec.com
sales@vanguardelec.com