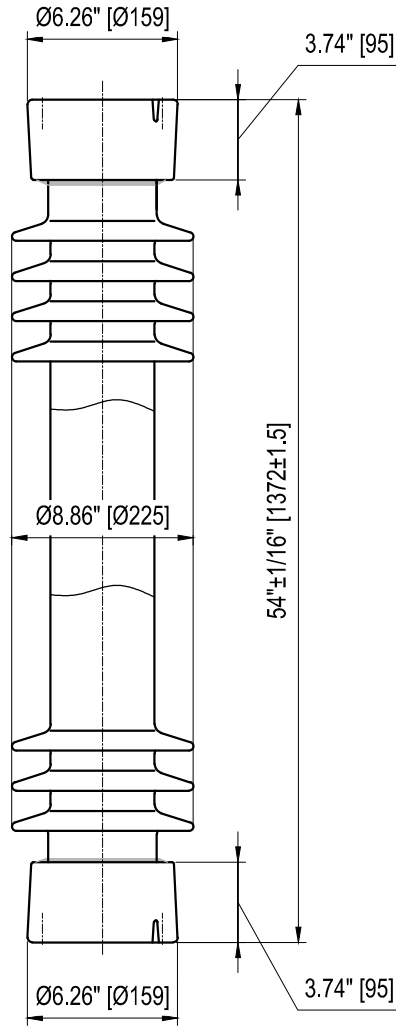
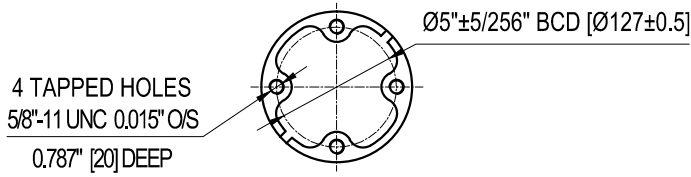
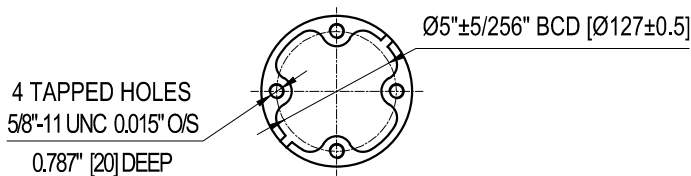


TOP INSTALLATION HOLES



BOTTOM INSTALLATION HOLES



**ELECTRICAL PROPERTIES**

Critical Impulse Flashover Voltage	
Pos.:	710 kV
Low Frequency Withstand Voltage	
Wet:	275 kV
Impulse Withstand Voltage:	650 kV
Radio Influence Voltage Data:	
Test Voltage to Ground:	88 kV
Maximum RIV at 1000kHz:	200 $\mu$ V

**PHYSICAL PROPERTIES**

Creepage Distance:	132 in (3353 mm)
Net weight:	176 lbs (80 Kg)
Color:	Grey

**MECHANICAL PROPERTIES**

Cantilever Strength:	2200 lbs (9.8 kN)
Tension Strength:	25000 lbs (112 kN)
Torsion Strength:	90000 in-lbs (10.17 kN·m)
Compression Strength:	75000 lbs (334 kN)

According to Standard Specification: ANSI C 29.9

Galvanized parts as per ASTM 123

POST TYPE INSULATOR  
 REFERENCE: TR289-HL1-1  
 VTR289S1G1

DRAWING: TR289-HL1-1 VTR289S1G1 RV1



Vanguard Electric (R)  
 www.vanguardelec.com  
 sales@vanguardelec.com