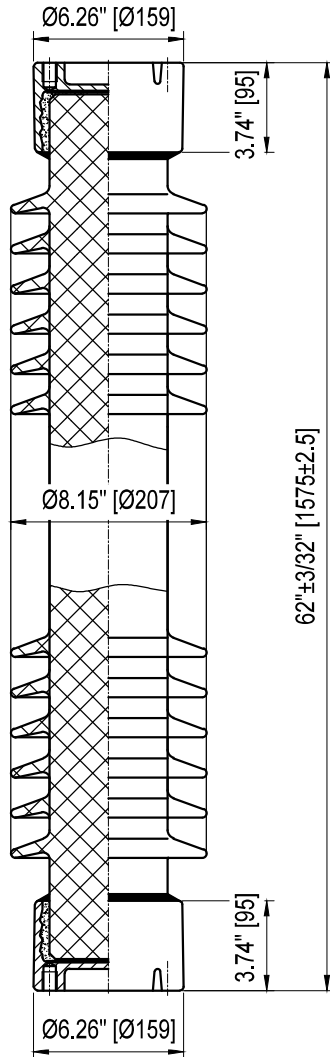
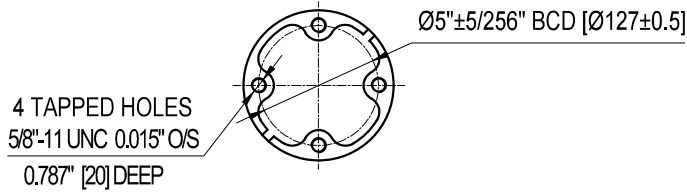
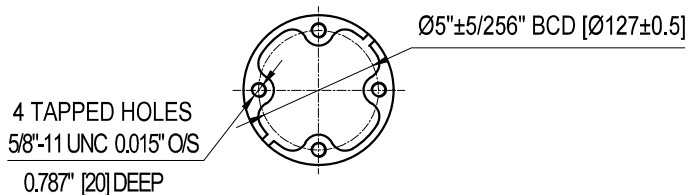


TOP INSTALLATION HOLES



BOTTOM INSTALLATION HOLES



Semi-Conductive Glazed

ELECTRICAL PROPERTIES

Critical Impulse Flashover Voltage	
Pos.:	810 kV
Low Frequency Withstand Voltage	
Wet:	315 kV
Impulse Withstand Voltage:	750 kV
Radio Influence Voltage Data:	
Test Voltage to Ground:	103 kV
Maximum RIV at 1000kHz:	500 μV

PHYSICAL PROPERTIES

Creepage Distance:	132 in (3353 mm)
Net weight:	178.2 lbs (81 Kg)
Color:	Grey

MECHANICAL PROPERTIES

Cantilever Strength:	1200 lbs (5.34 kN)
Tension Strength:	20000 lbs (89 kN)
Torsion Strength:	40000 in-lbs (4.52 kN·m)
Compression Strength:	60000 lbs (267 kN)

According to Standard Specification: ANSI C 29.9

Galvanized parts as per ASTM 123

POST TYPE INSULATOR
REFERENCE: TR291
VTR291SSG1-SCG

DRAWING: TR291 VTR291SSG1-SCG RV0



Vanguard Electric (R)
www.vanguardelec.com
sales@vanguardelec.com