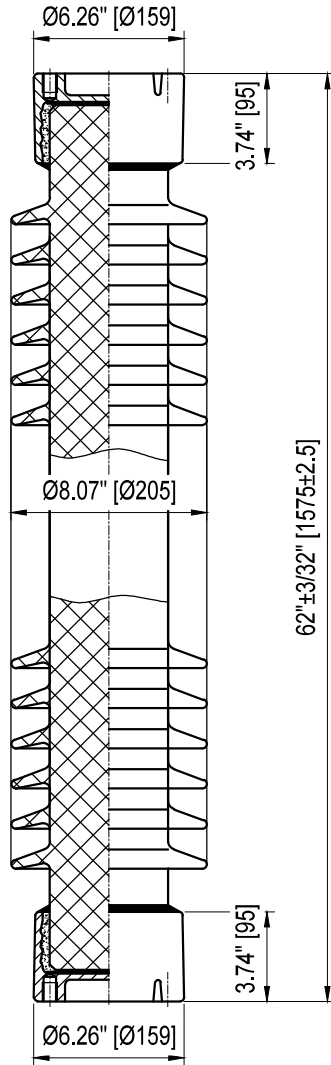
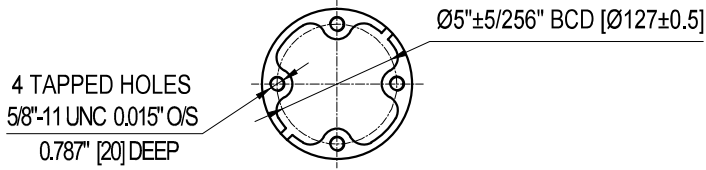
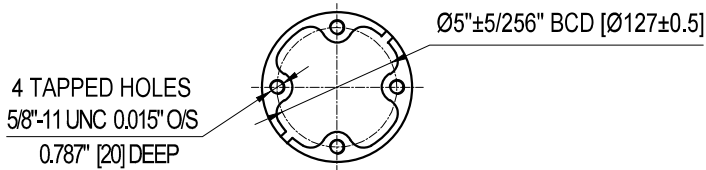


TOP INSTALLATION HOLES



BOTTOM INSTALLATION HOLES



**Semi-Conductive Glazed**

**ELECTRICAL PROPERTIES**

Critical Impulse Flashover Voltage	
Pos.:	810 kV
Low Frequency Withstand Voltage	
Wet:	315 kV
Impulse Withstand Voltage:	750 kV
Radio Influence Voltage Data:	
Test Voltage to Ground:	103 kV
Maximum RIV at 1000kHz:	500 µV

**PHYSICAL PROPERTIES**

Creepage Distance:	132 in (3353 mm)
Net weight:	-
Color:	Grey

**MECHANICAL PROPERTIES**

Cantilever Strength:	2000 lbs (8.9 kN)
Tension Strength:	25000 lbs (111 kN)
Torsion Strength:	90000 in-lbs (10.17 kN·m)
Compression Strength:	75000 lbs (334 kN)

According to Standard Specification: ANSI C 29.9

Galvanized parts as per ASTM 123

POST TYPE INSULATOR  
REFERENCE: TR295  
VTR295SSG1-SCG

DRAWING: TR295 VTR295SSG1-SCG RV0



Vanguard Electric (R)  
www.vanguardelec.com  
sales@vanguardelec.com