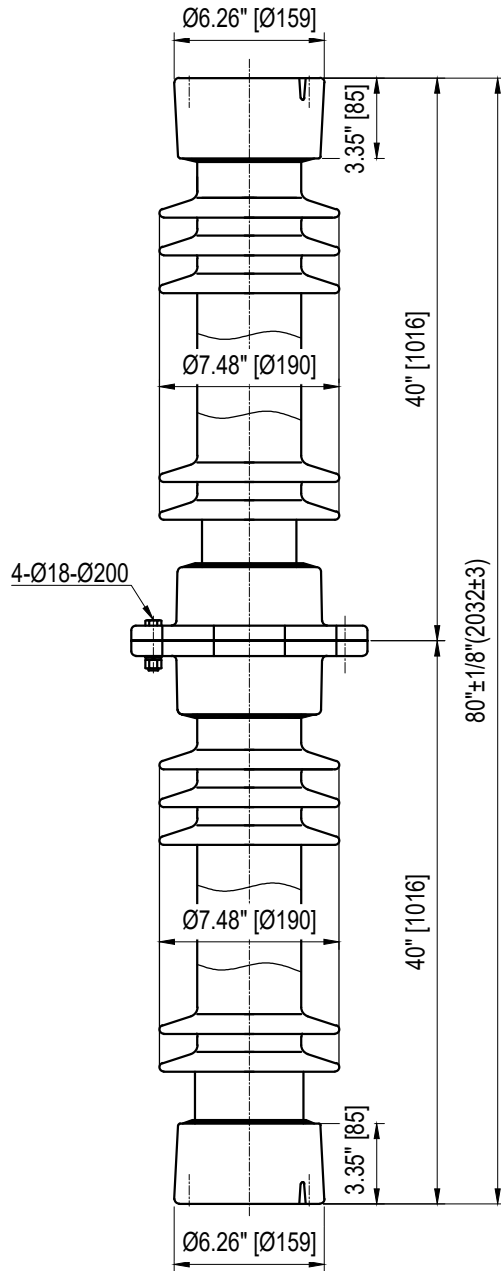
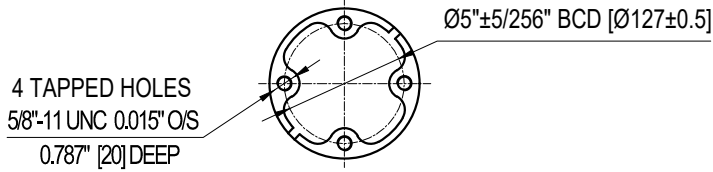
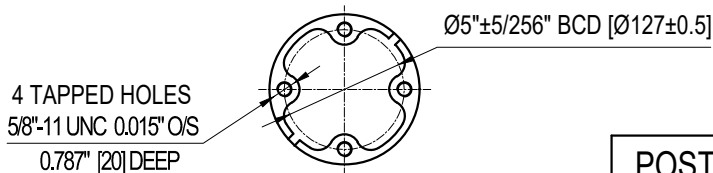


TOP INSTALLATION HOLES



BOTTOM INSTALLATION HOLES



ELECTRICAL PROPERTIES

Critical Impulse Flashover Voltage	
Pos.:	1010 kV
Low Frequency Withstand Voltage	
Wet:	385 kV
Impulse Withstand Voltage:	900 kV
Radio Influence Voltage Data:	
Test Voltage to Ground:	146 kV
Maximum RIV at 1000kHz:	500 µV

PHYSICAL PROPERTIES

Creepage Distance:	165 in (4191 mm)
Net weight:	209 lbs (95Kg)
Color:	Grey

MECHANICAL PROPERTIES

Cantilever Strength:	950 lbs (4.23 kN)
Tension Strength:	20000 lbs (89 kN)
Torsion Strength:	40000 in-lbs (4.52 kN·m)
Compression Strength:	60000 lbs (267 kN)

According to Standard Specification: ANSI C 29.9

Galvanized parts as per ASTM 123

POST TYPE INSULATOR
REFERENCE: TR304
VTR304SSG1

DRAWING: TR304 VTR304SSG1 RV1



Vanguard Electric (R)
www.vanguardelec.com
sales@vanguardelec.com