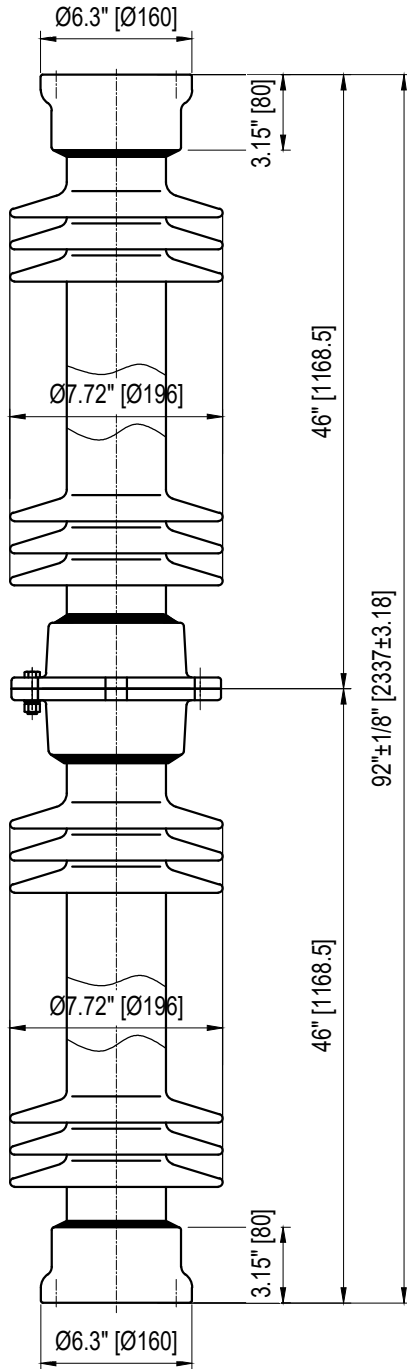
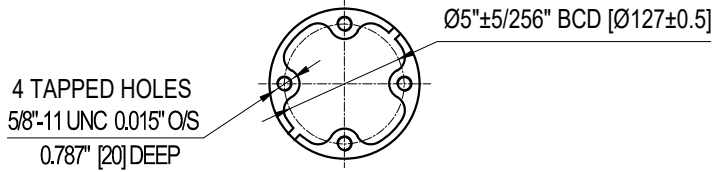
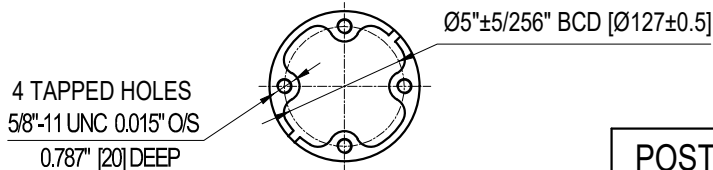


TOP INSTALLATION HOLES



BOTTOM INSTALLATION HOLES



**ELECTRICAL PROPERTIES**

Critical Impulse Flashover Voltage	
Pos.:	1210 kV
Low Frequency Withstand Voltage	
Wet:	455 kV
Impulse Withstand Voltage:	1050 kV
Radio Influence Voltage Data:	
Test Voltage to Ground:	146 kV
Maximum RIV at 1000kHz:	500 µV

**PHYSICAL PROPERTIES**

Creepage Distance:	198 in (5029 mm)
Net weight:	226.6 lbs (103 Kg)
Color:	Grey

**MECHANICAL PROPERTIES**

Cantilever Strength:	800 lbs (3.6 kN)
Tension Strength:	20000 lbs (89 kN)
Torsion Strength:	40000 in-lbs (4.52 kN·m)
Compression Strength:	60000 lbs (267 kN)

According to Standard Specification: ANSI C 29.9

Galvanized parts as per ASTM 123

**POST TYPE INSULATOR**  
**REFERENCE: TR312**  
**VTR312SSG1**

DRAWING: TR312 VTR312SSG1 RV1



Vanguard Electric (R)  
[www.vanguardelec.com](http://www.vanguardelec.com)  
[sales@vanguardelec.com](mailto:sales@vanguardelec.com)