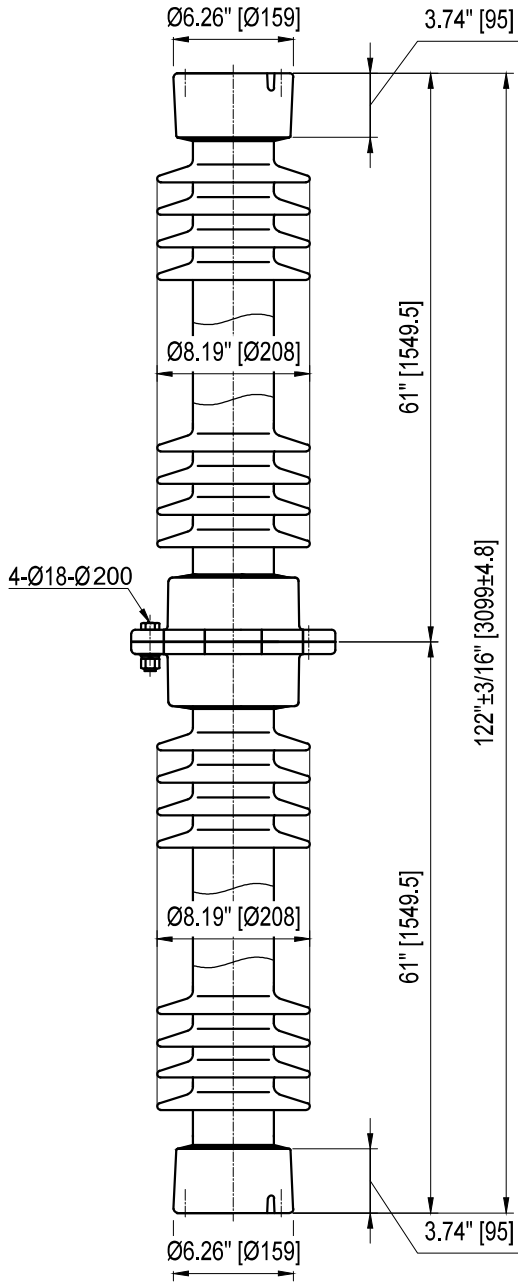
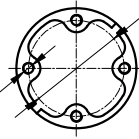


TOP INSTALLATION HOLES

$\varnothing 5'' \pm 5/256''$  BCD [ $\varnothing 127 \pm 0.5$ ]

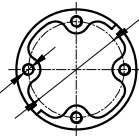
4 TAPPED HOLES  
5/8"-11 UNC 0.015" O/S  
0.787" [20] DEEP



BOTTOM INSTALLATION HOLES

$\varnothing 5'' \pm 5/256''$  BCD [ $\varnothing 127 \pm 0.5$ ]

4 TAPPED HOLES  
5/8"-11 UNC 0.015" O/S  
0.787" [20] DEEP



**Semi-Conductive Glazed**

**ELECTRICAL PROPERTIES**

Critical Impulse Flashover Voltage	
Pos.:	1610 kV
Low Frequency Withstand Voltage	
Wet:	590 kV
Impulse Withstand Voltage:	1470 kV
Radio Influence Voltage Data:	
Test Voltage to Ground:	220 kV
Maximum RIV at 1000kHz:	1000 $\mu$ V

**PHYSICAL PROPERTIES**

Creepage Distance:	264 in (6706 mm)
Net weight:	363 lbs (165 Kg)
Color:	Grey

**MECHANICAL PROPERTIES**

Cantilever Strength:	900 lbs (4.0 kN)
Tension Strength:	25000 lbs (111 kN)
Torsion Strength:	90000 in-lbs (10.2 kN·m)
Compression Strength:	75000 lbs (333.4 kN)

According to Standard Specification: ANSI C 29.9

Galvanized parts as per ASTM 123

POST TYPE INSULATOR  
REFERENCE: TR330  
VTR330SSG1-SCG

DRAWING: TR330 VTR330SSG1-SCG RV0



Vanguard Electric (R)  
www.vanguardelec.com  
sales@vanguardelec.com