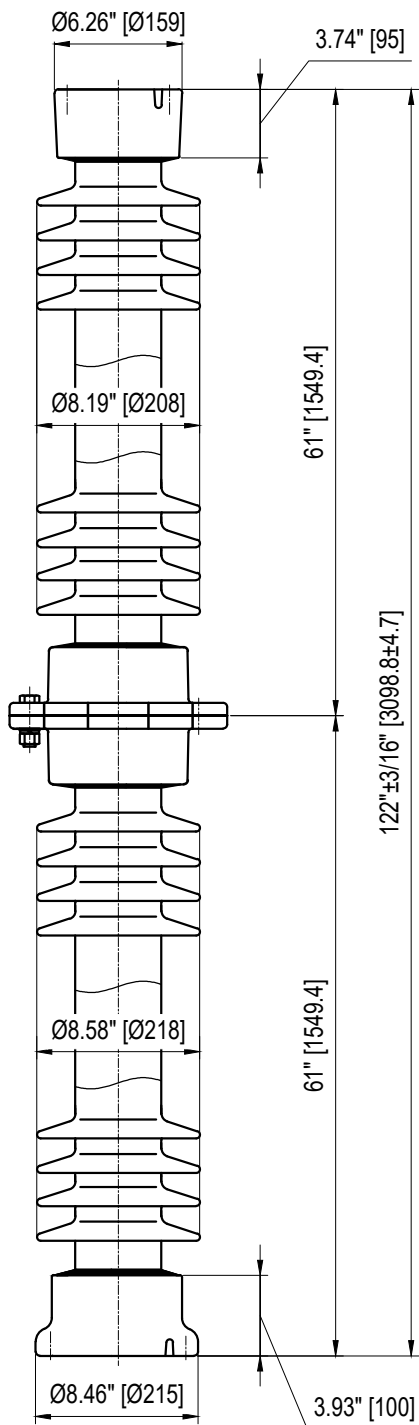
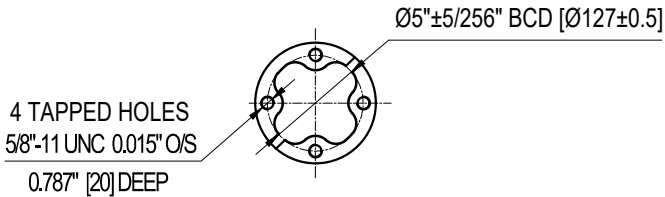
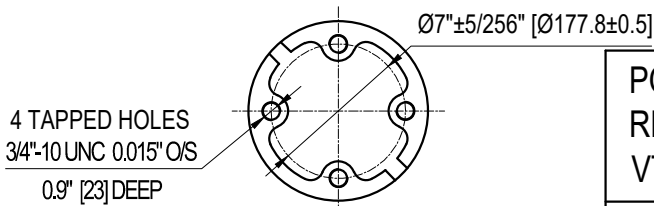


TOP INSTALLATION HOLES



BOTTOM INSTALLATION HOLES



ELECTRICAL PROPERTIES

Critical Impulse Flashover Voltage	
Pos.:	1610 kV
Low Frequency Withstand Voltage	
Wet:	590 kV
Impulse Withstand Voltage:	1470 kV
Radio Influence Voltage Data:	
Test Voltage to Ground:	220 kV
Maximum RIV at 1000kHz:	1000 μ V

PHYSICAL PROPERTIES

Creepage Distance:	264 in (6706 mm)
Net weight:	396 lbs (180 Kg)
Color:	Grey

MECHANICAL PROPERTIES

Cantilever Strength:	1170 lbs (5.2 kN)
Tension Strength:	20000 lbs (89 kN)
Torsion Strength:	40000 in-lbs (4.52 kN·m)
Compression Strength:	60000 lbs (267 kN)

According to Standard Specification: ANSI C 29.9

Galvanized parts as per ASTM 123

POST TYPE INSULATOR
REFERENCE: TR371
VTR371SSG1

DRAWING: TR371 VTR371SSG1 RV1



Vanguard Electric (R)
www.vanguardelec.com
sales@vanguardelec.com