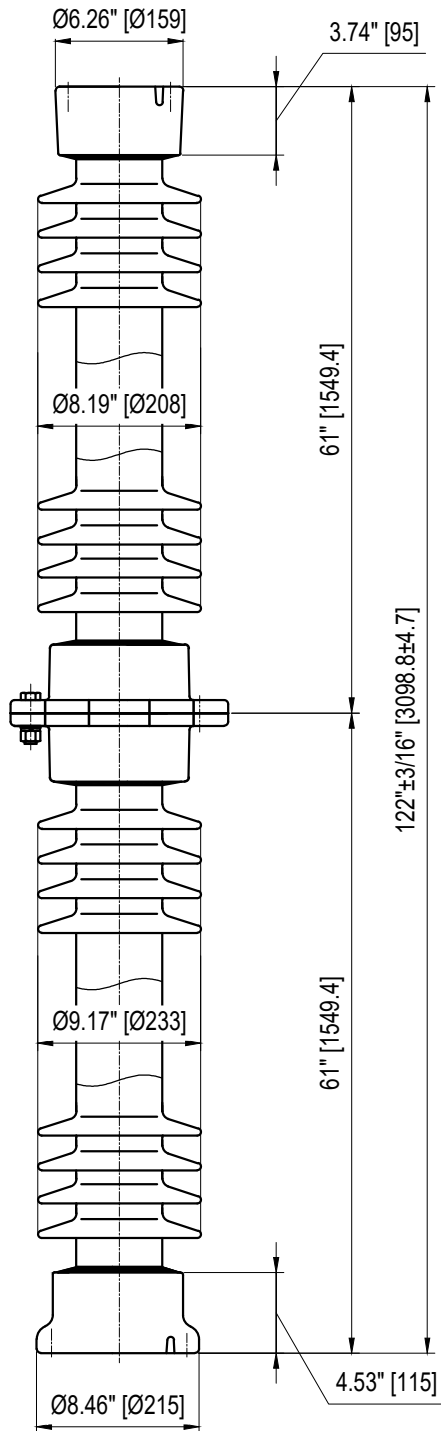
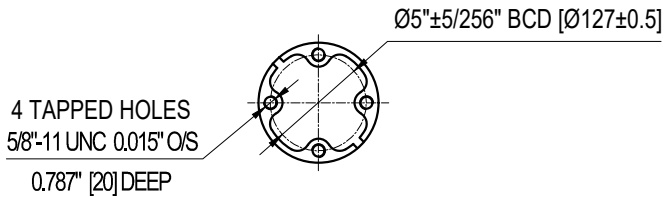
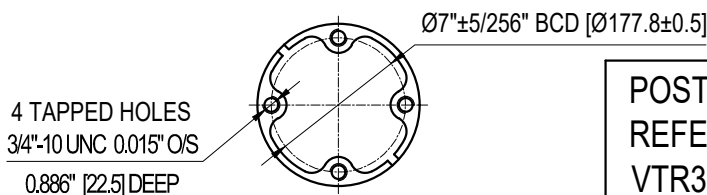


TOP INSTALLATION HOLES



BOTTOM INSTALLATION HOLES



ELECTRICAL PROPERTIES

Critical Impulse Flashover Voltage	
Pos.:	1610 kV
Low Frequency Withstand Voltage	
Wet:	590 kV
Impulse Withstand Voltage:	1470 kV
Radio Influence Voltage Data:	
Test Voltage to Ground:	220 kV
Maximum RIV at 1000kHz:	1000 µV

PHYSICAL PROPERTIES

Creepage Distance:	264 in (6706 mm)
Net weight:	457.6 lbs (208 Kg)
Color:	Grey

MECHANICAL PROPERTIES

Cantilever Strength:	1750 lbs (7.8 kN)
Tension Strength:	20000 lbs (89 kN)
Torsion Strength:	40000 in-lbs (4.52 kN·m)
Compression Strength:	60000 lbs (267 kN)

According to Standard Specification: ANSI C 29.9

Galvanized parts as per ASTM 123

POST TYPE INSULATOR
REFERENCE: TR373
VTR373SSG1

DRAWING: TR373 VTR373SSG1 RV1



Vanguard Electric (R)
 www.vanguardelec.com
 sales@vanguardelec.com