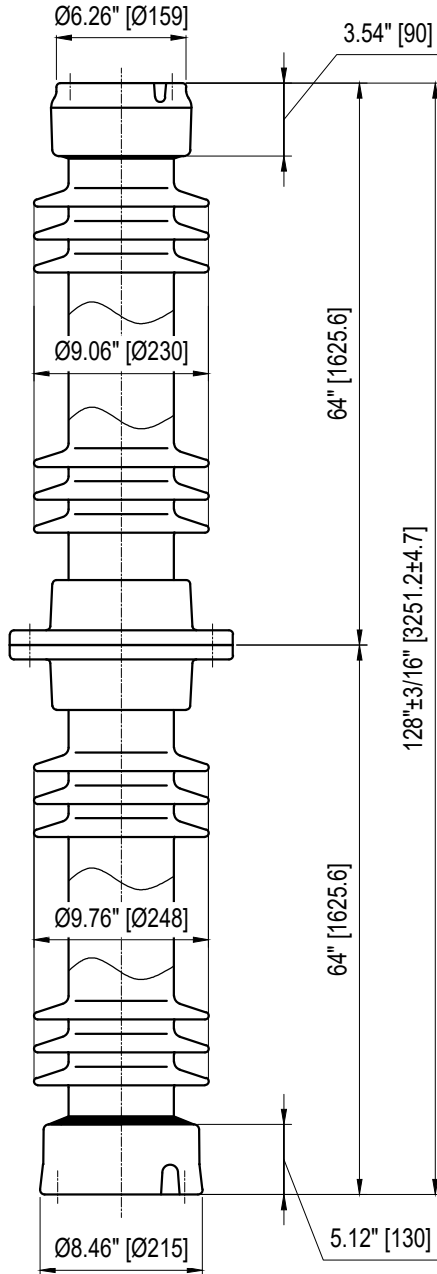
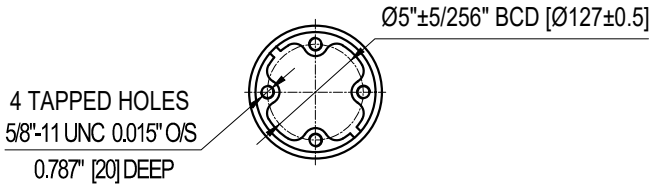
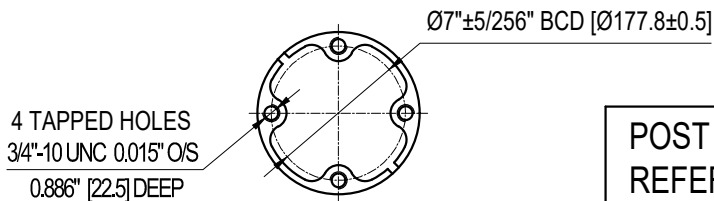


TOP INSTALLATION HOLES



BOTTOM INSTALLATION HOLES



ELECTRICAL PROPERTIES

Critical Impulse Flashover Voltage	
Pos.:	1710 kV
Low Frequency Withstand Voltage	
Wet:	620 kV
Impulse Withstand Voltage:	1550 kV
Radio Influence Voltage Data:	
Test Voltage to Ground:	318 kV
Maximum RIV at 1000kHz:	2000 µV

PHYSICAL PROPERTIES

Creepage Distance:	280 in (7112 mm)
Net weight:	536.8 lbs (244 Kg)
Color:	Light Grey

MECHANICAL PROPERTIES

Cantilever Strength:	1700 lbs (7.6 kN)
Tension Strength:	20000 lbs (89 kN)
Torsion Strength:	40000 in-lbs (4.52 kN·m)
Compression Strength:	60000 lbs (267 kN)

According to Standard Specification: ANSI C 29.9

Galvanized parts as per ASTM 123

POST TYPE INSULATOR
REFERENCE: TR379
VTR379SSG1

DRAWING: TR379 VTR379SSG1 RV1



Vanguard Electric (R)
www.vanguardelec.com
sales@vanguardelec.com