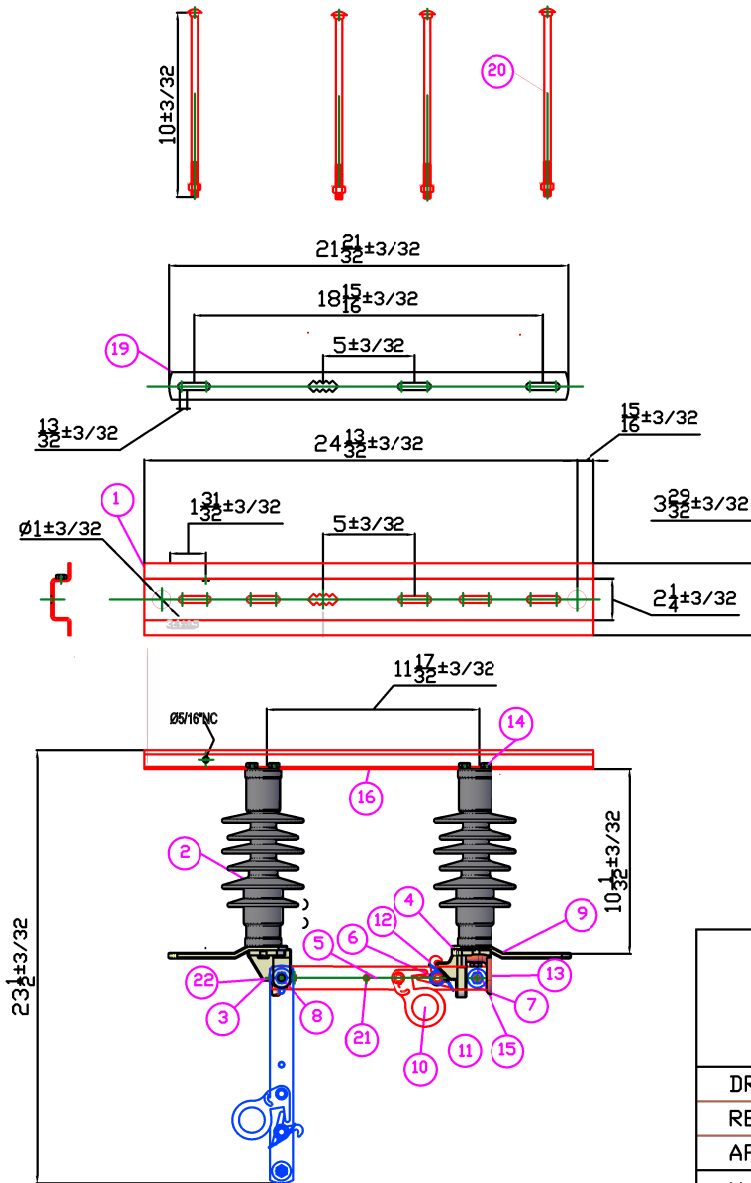


TECHNICAL DRAWING

Nº	DESCRIPTION	REVISED	DATE



NOTE : * Units In Inches

22	4	Washer 3/8'	Stainless steel
21	2	Spilke separator 1/4'	Round brass 1/8"
20	4	Screw back plate	galv screw 3/8X10
19	1	Back plate	Hr 1 1/2x3/8 Galv
18	8	Washer 5/16'	Stainless steel
17	8	Washer 5/16'	Stainless steel
16	1	Nameplate	Aluminum 56X41 mm
15	2	Hexagonal screw 5/16' x 1'	Stainless steel
14	7	Hexagonal screw 5/16' x 3/4'	Stainless steel
13	1	Hook SE	
12	1	Torsion spring	Stainless steel
11	1	Hitch	Cu alloy
10	1	Hookstick	Cu alloy
9	2	Contact Sn	Cu electrolytic 1/4X 1/4
8	3	Lock nut 3/8'	Stainless steel
7	6	Conical washer	Stainless steel
6	3	Screw 3/8"x2 1/2'	Stainless steel 304
5	2	Blade	Cu 1/4"x 1/4"plating
4	1	Contact Input	Cu alloy w/silver plating
3	1	Contact output	Cu alloy w/silver plating
2	2	Insulator	Polymer insulator
1	1	Base	Galvanized plated HR
ITEM	QTY	DESCRIPTION	SPECIFICATION



PBL2 DISTRIBUTION HOOKSTICKS
900 A
POLYMER INSULATOR

DRAWING :	J. G. C.	16-OCT-20
REVISED :	J. C. .C	16-OCT-20
APPROVED :	J. G. C.	16-OCT-20

PBL2-15900-10
PBL2 15.5 kV 110 kV BIL 900 AMP
POLYMER INSULATOR

Material
As per specification

Scala:
S/E

Drawing N° :
PBL2-15900-10