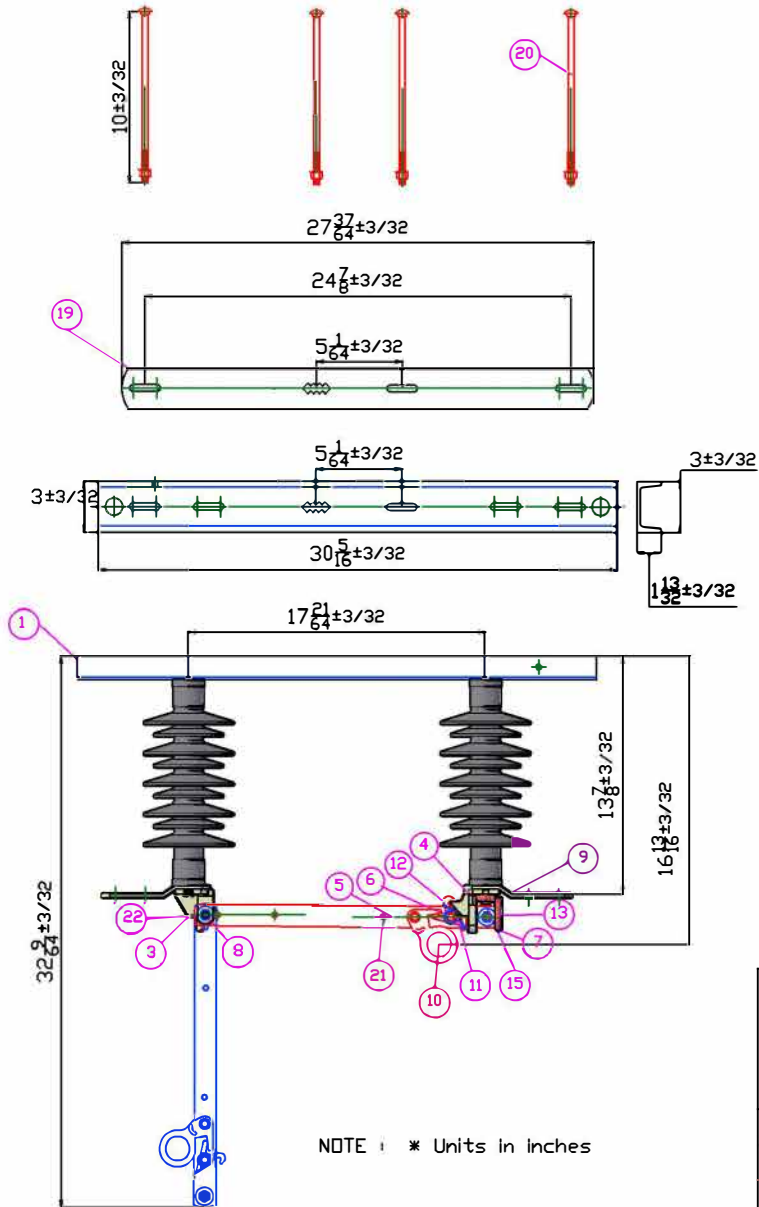


TECHNICAL DRAWING

Nº	DESCRIPTION	REVISED	DATE



22	4	Washer 3/8"	Stainless steel
21	4	Spike separator 1/8"	Round brass 5/16"
20	4	Screw back plate	galv screw 3/8X10
19	1	Back plate	Hr 2x3/8 Galv
18	8	Washer 5/16"	Stainless steel
17	8	Washer 5/16"	Stainless steel
16	1	Nameplate	Aluminum 56X41 mm
15	2	Hexagonal screw 5/16" x 1"	Stainless steel
14	7	Hexagonal screw 5/16" x 3/4"	Stainless steel
13	1	Hook SE	
12	1	Torsion spring	Stainless steel
11	1	Hitch	Cu alloy
10	1	Hookstick	Cu alloy
9	2	Contact Sn	Cu electrolytic 1 1/2 X 3/16
8	3	Luck nut 3/8"	Stainless steel
7	12	Conical washer	Stainless steel
6	3	Screw de 3/8X2 1/2"	Stainless steel 304
5	2	Blade	Cu 1 1/4" x 1/16" plating
4	1	Contact input	Cu alloy w/silver plating
3	1	Contact output	Cu alloy w/silver plating
2	2	Insulator	Polymer insulator
1	1	Base	Galvanized plate HR
ITEM	QTY	DESCRIPTION	SPECIFICATION



PBL2-DISTRIBUTION HOOKSTICKS
600 A
POLYMER INSULATOR

DRAWING :	J. G. C.	19-OCT-20
REVISED :	J. C. .C	19-OCT-20
APPROVED :	J. G. C.	19-OCT-20

PBL2-38600-10
PBL2 38 kV 150 kV BIL 600 AMP
POLYMER INSULATOR

Material	As per specification	Scala: S/E	Drawing Nº : PBL2-38600-10
----------	----------------------	---------------	-------------------------------