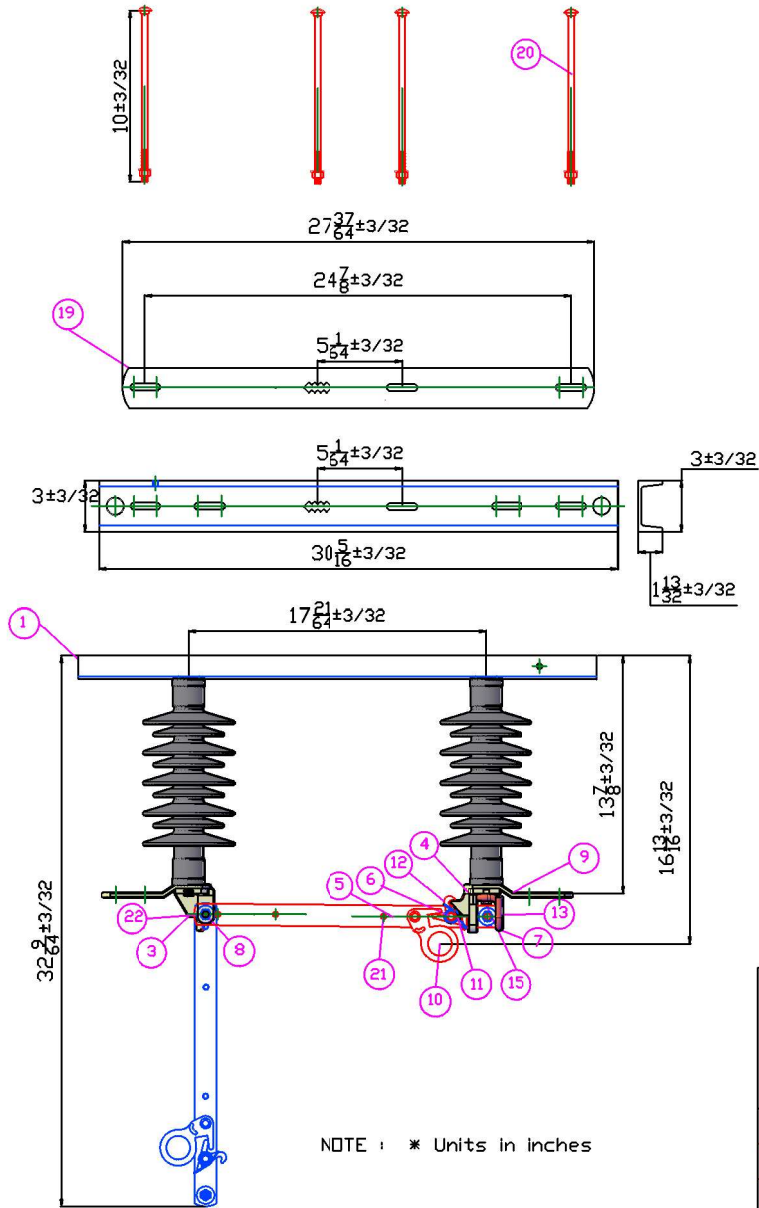


TECHNICAL DRAWING

Nº	DESCRIPTION	REVISED	DATE



22	4	Washer 3/8"	Stainless steel
21	2	Spike separator 1/4"	Round brass 1/8"
20	4	Screw back plate	galv screw 8X10
19	1	Back plate	Hr 2x3/8 Galv
18	8	Washer 5/16"	Stainless steel
17	8	Washer 5/16"	Stainless steel
16	1	Nameplate	Aluminum 56X41 mm
15	2	Hexagonal screw 5/16" x 1"	Stainless steel
14	7	Hexagonal screw 5/16" x 3/4"	Stainless steel
13	1	Hook SE	
12	1	Torsion spring	Stainless steel
11	1	Hitcn	Cu alloy
10	1	Hookstick	Cu alloy
9	2	Contact Sn	Cu electrolytic 1 1/2 X 1/4
8	3	Lock nut 3/8"	Stainless steel
7	6	Conical washer	Stainless steel
6	3	Screw 3/8"x2 1/2"	Stainless steel 304
5	2	Blade	Cu 1 1/4"x 1/4"plating
4	1	Contact input	Cu alloy w/silver plating
3	1	Contact output	Cu alloy w/silver plating
2	2	Insulator	Polymer insulator
1	1	Base	Galvanized plated HR
ITEM	QTY	DESCRIPTION	SPECIFICATION



PBL2 DISTRIBUTION HOOKSTICKS
900 A
POLYMER INSULATOR

DRAWING :	J. G. C.	19-OCT-20
REVISED :	J. C. .C	19-OCT-20
APPROVED :	J. G. C.	19-OCT-20

PBL2-38900-10
PBL2 38 kV 150 kV BIL 900 AMP
POLYMER INSULATOR

Material : As per specification

Scale : S/E

Drawing Nº : PBL2-38900-10