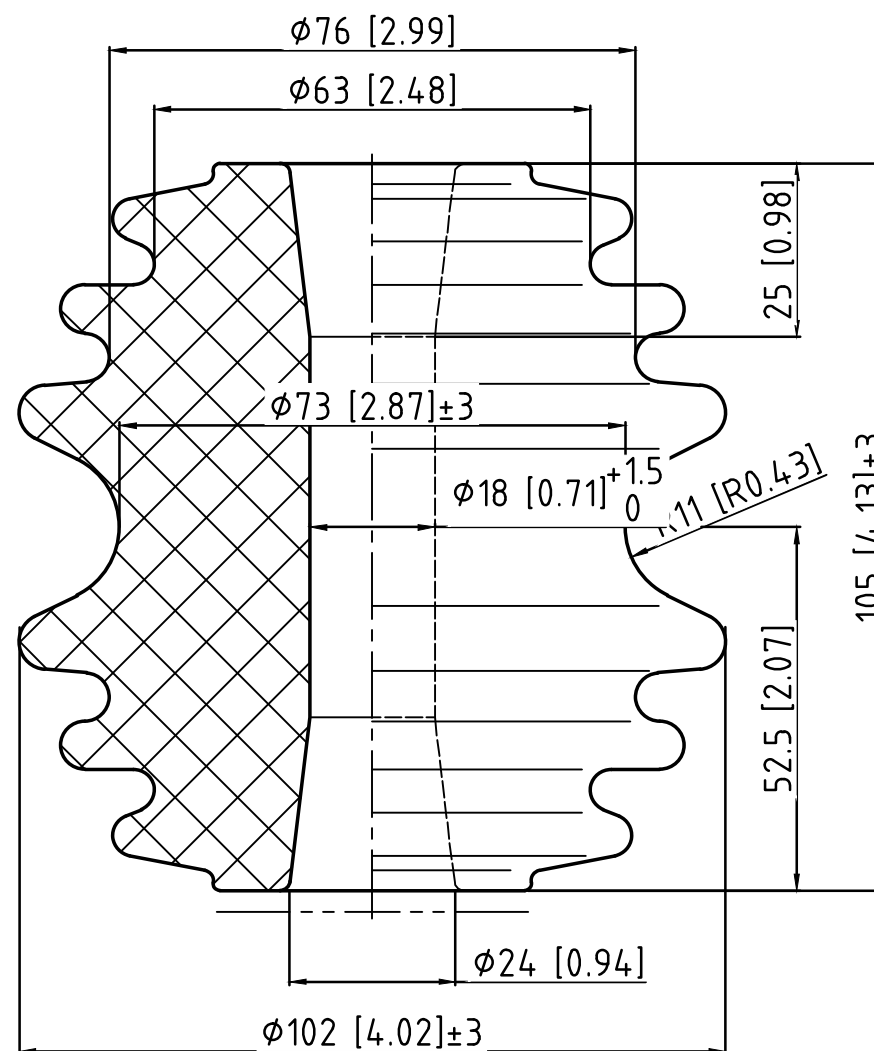


mm [inches]




TECHNICAL DATA

Specification Applied : ANSI C29.3

- 1. Mechanical values
 - a. Mechanical failing load , kN 26.7(6000lbs)
- 2. Electrical values
 - a. Power-frequency dry flashover voltage , kV 35
 - b. Power-frequency wet flashover voltage , kV
 - Vertical 18
 - Horizontal 25
- 3. Color: Grey



Spool Insulator

	Reference	53-5
	VE No.	53-5 SG1
	Rev	0
Weight	2.5 lbs	Page 1 of 1
Vanguard Electric,LLC		