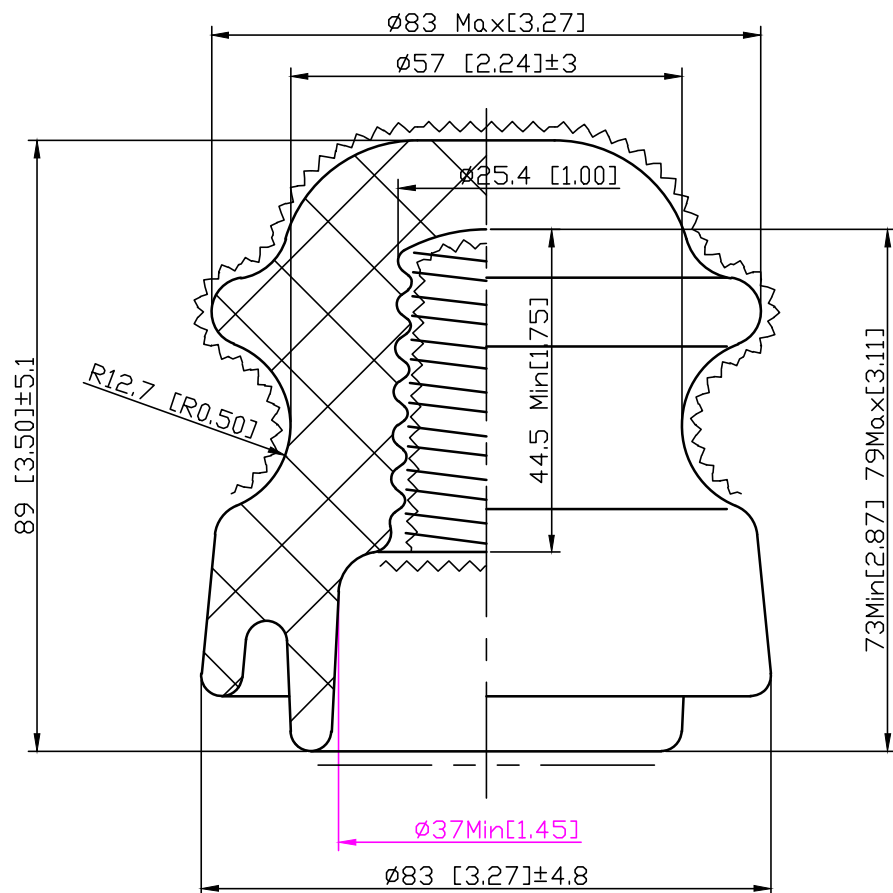



mm [inches]



TECHNICAL DATA

Type	ANSI 55-1
Standard Applied	ANSI C29.5
Creepage Distance	102mm (4")
Dry arcing distance	57mm (2-1/4")
Cantilever Strength Load	13kN (3000lbs)
Low Frequency Dry Flashover Voltage	35kV
Low Frequency Wet Flashover Voltage	20kV
Impulse Flashover (positive)	50kV
(negative)	70kV
Power-Frequency Puncture Voltage	50kV
Radio-Influence Voltage	
Test Voltage to Ground	5kV
Maximum RIV, at 1000kHz	50 μ V
Visual Inspection According to IEC 383	
Colour:Grey	

***** MATERIAL: PORCELAIN

	Pin Insulator	Reference	55-1
		VE No.	55-1 SG1
		Rev	0
Weight	Page 1 of 1	Vanguard Electric, LLC	